



Come in to your world

*"If a man insisted always on being serious,
and never allowed himself a bit of fun, he
would go mad without knowing it."*

-Herodotus of Greece, First Historian, 5th Century B.C.



Robb Report
Best of the Best



World Yachts Trophies
Winner, Best Design



International SuperYacht Society
Winner, Best Design



CASUAL OPULENCE

SOOTHE AND STIMULATE YOUR SENSES

NISI LIFE

COME IN TO YOUR WORLD

You've arrived. As you sail into the marina, heads begin to turn. NISI is beautiful. She's yours.

NISI, like no other, is at ease in the South of France in summer, as she is in Bahamas during calming winters. She is a sophisticated traveling companion ready to share her journey with you.

From sundrenched isles and salty breezes to perfect parties underneath the majestic beauty of the moonlit sky, NISI is the unspoiled definition of irresistible attractiveness. Universally desired, this is your unique opportunity to make her yours.

NISI embraces everything you need for a superior lifestyle experience, a mixture of relaxed chic, contemporary cool and understated elegance. She's a one-of-a-kind blend of cutting-edge sensibility, excitement and style.



Actual photo of NISI 2400



NISI ESSENCE

A DISTINCT IMPRESSION

Like a set of bare footprints in the sand of a virgin beach, NISI creates a distinct impression while pioneering a new genre of yachting. The award winning contemporary design incorporates many features and systems traditionally reserved for far larger yachts.

NISI represents a fresh approach and dramatic departure from the generic. She is considered the yardstick by which other yachts of this size have come to be measured.

Having drawn a line in the sand with this debutant, NISI looks forward to leading sophisticates to explore their passions. Take a look inside... discover yourself.

THE PINNACLE OF ESCAPE

NISI IS SOLITARY IN HER CLASS



Actual photo of NISI 2400



NISI STYLE LEGENDARY

An attractive blend of legendary styling and versatility that is solitary in her class.

An instant modern classic that exudes charm, NISI seamlessly unites the lines of the past with the shape of the future.

Beneath the surface, she sparkles with today's state of the art technology, combining outstanding performance and stability with luxury and comfort.

“LEGENDARY STYLING
NAVAL ARCHITECTURE BY SETZER DESIGN”



Actual photo of NISI 1700



NISI STYLE

CASUAL OPULENCE

A tantalizing combination of casual opulence and breathtaking performance. Acclaimed designers have overseen the creation of NISI with the desires of today's yacht owners in mind, emphasizing simplicity and spirit.

NISI is crafted on a limited production basis as a complete series to 120 feet.

Size and length are no longer taken as the key expression of an owner's needs. Now, owners are turning toward a yacht with a focus on design and function that is a unique expression of themselves.

“ THE BEST YACHTSMEN HOLD A SPECIAL PLACE IN THEIR HEARTS FOR THE SIMPLE YACHT THAT CONNECTS THEM TO THE SEA. THE SIMPLE PLEASURE OF CASUAL ELEGANCE AND OPEN WATER PERFORMANCE IS REALIZED IN NISI. ”

-Christos Livadas, Founder & CEO



Actual photo of NISI 2400



INTERIORS & DECOR

TRANQUIL SURROUNDINGS

The rare art of world-class craftsmanship can be found throughout every detail.

Space flows to create an expansive feel. Large windows throughout reveal stunning views. Innovative genius has been infused into every detail of this light and airy expanse. The serene zen-like atmosphere soothes with teak and warm toned materials.

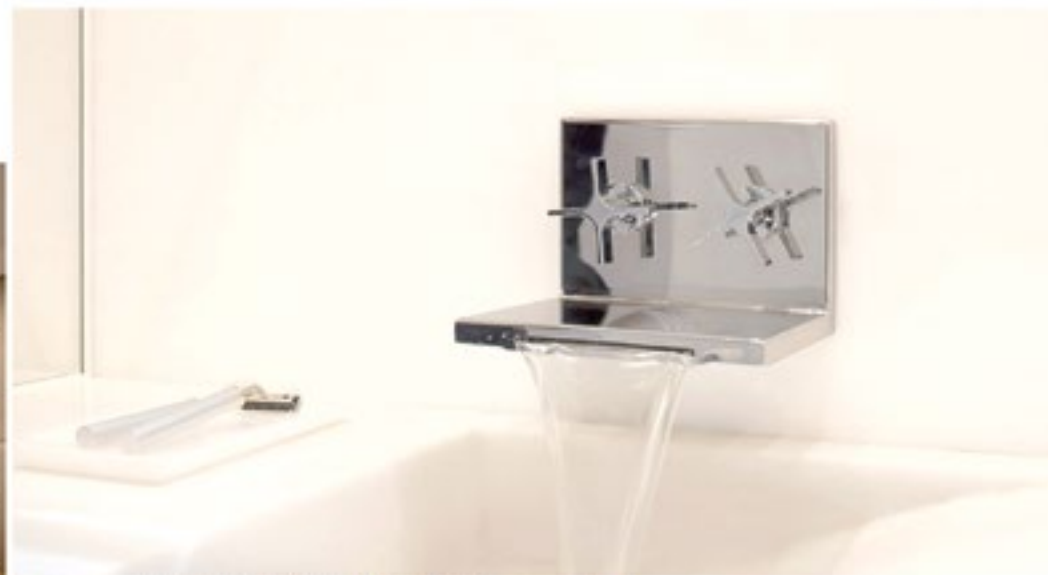
The generous open plan of NISI blurs the lines between indoors and outdoors. Customized spaces may be fitted with your choice of wildly romantic, sensual, and dreamlike designs. NISI mixes custom-designed furnishings and fixtures with a sophisticated color palette, creating a dynamic yet relaxed space. Unique accents and luxurious amenities allow for cool comfort.

A SEAMLESS INFUSION

OF INDOOR AND OUTDOOR

INTERIORS & DECOR

TRANQUIL SURROUNDINGS



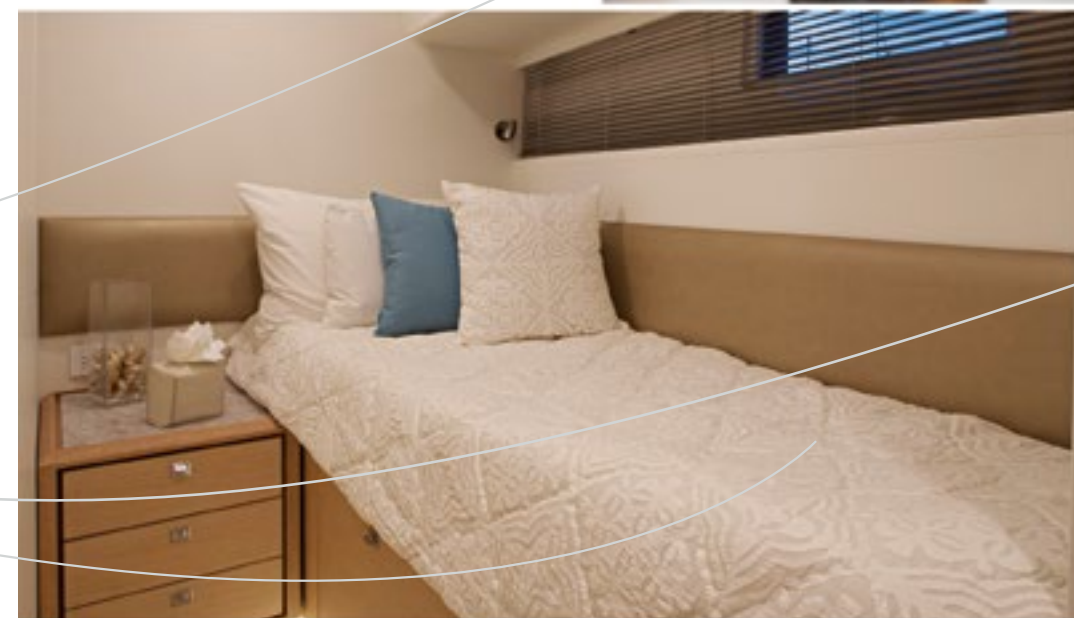
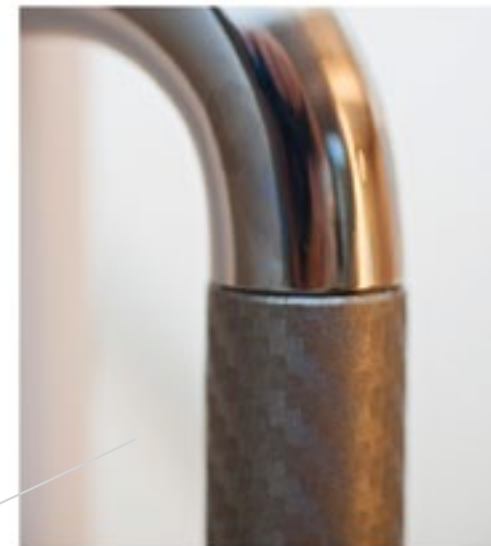
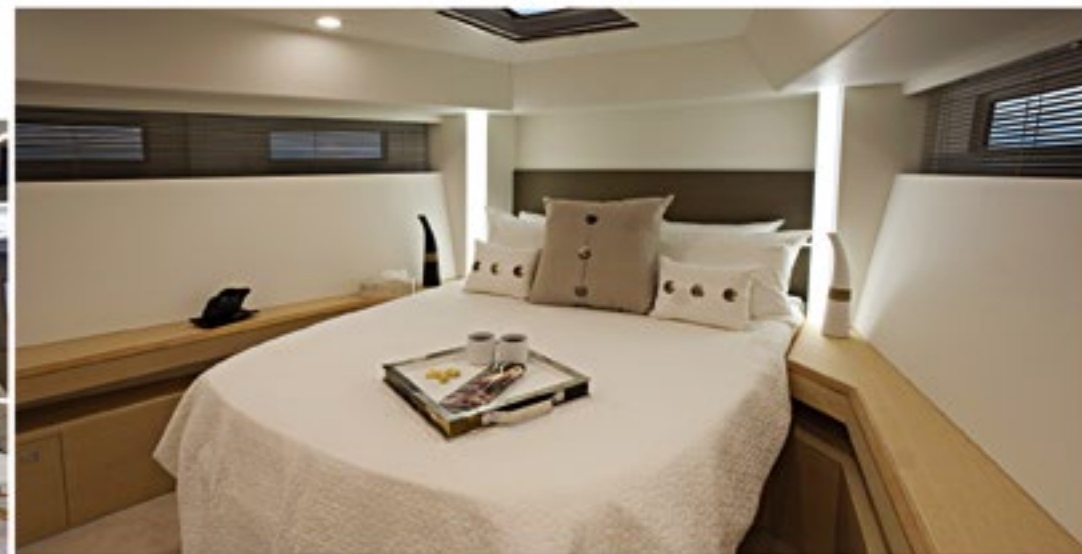


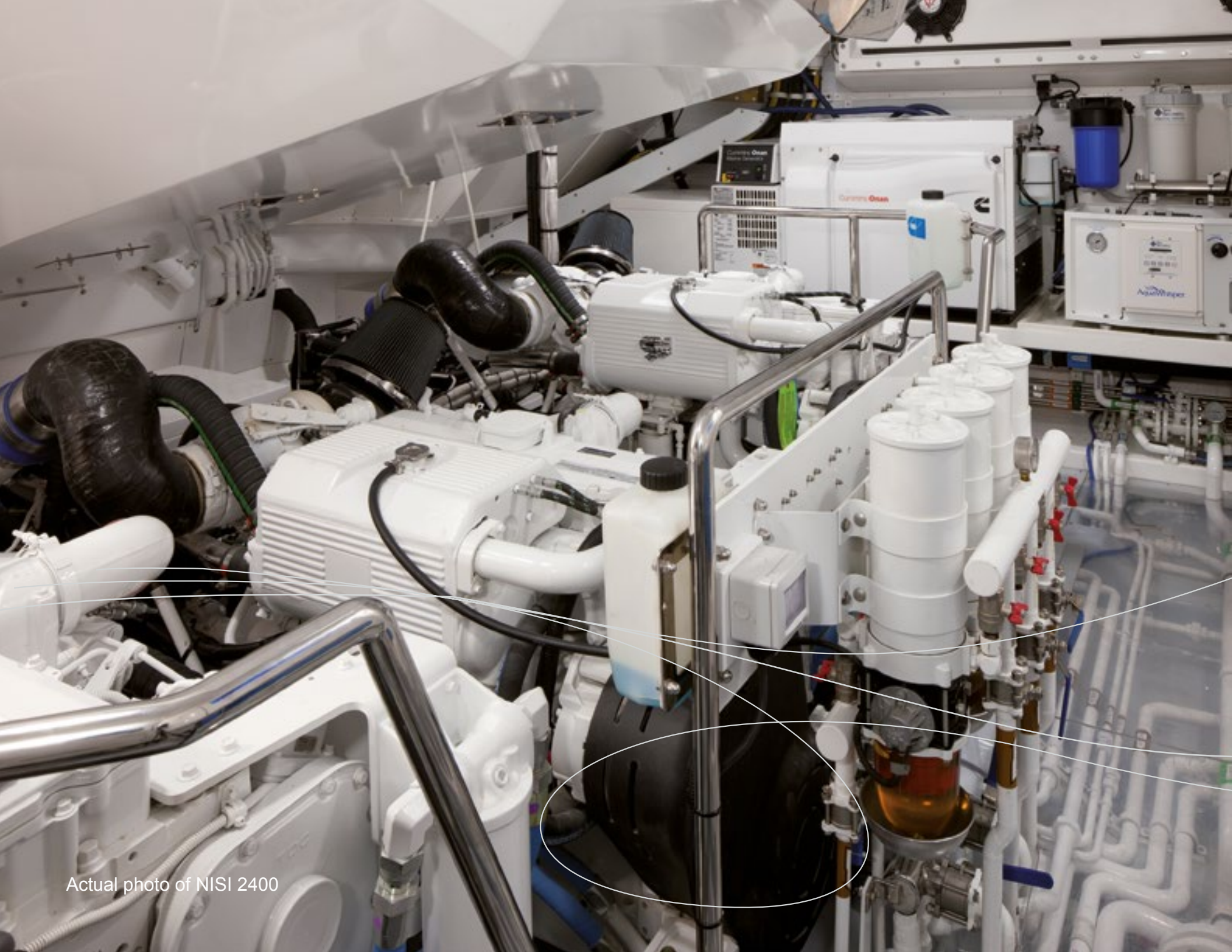
Actual photo of NISI 1700



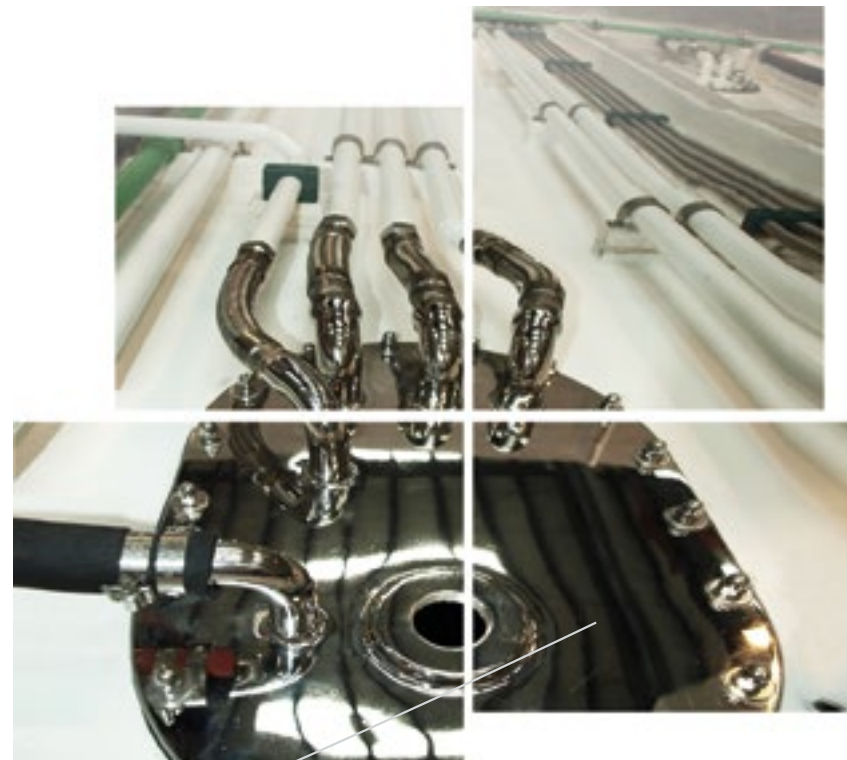
INTERIORS & DECOR

TRANQUIL SURROUNDINGS





Actual photo of NISI 2400



ENGINEERING BUILT TO LAST.

Systems are engineered to superyacht and commercial ship safety standards, all built with certified materials and equipment.

All water, fuel, fire-fighting, emergency bilge, and hydraulic systems are fitted entirely with metal plumbing. Her engine room is encased with aerospace insulation, tested to 1,000°F (538°C), to control heat from reaching guest quarters in the event of a fire for a minimum of 30 minutes.

Salon and other floors are floated with added acoustic insulation. The entire interior forward section of the hull along her chines and waterline is coated with advanced sound deadening material that further reduces the noise of water-slap, while underway and at anchor. NISI exceeds the highest engineered quality, safety and comfort standards.



CERTIFIED RINA CHARTER CLASS & MCA COMMERCIAL (MGN280)

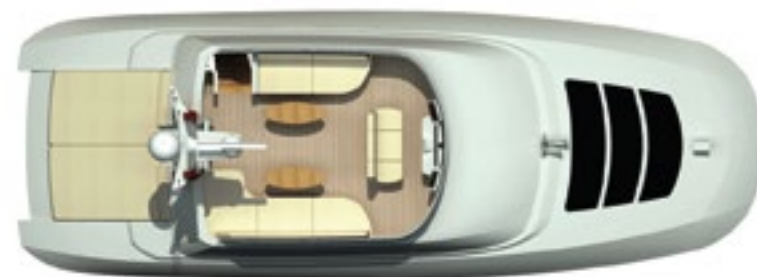
NISI 2400 is the first and only yacht in the world under 24-meters to achieve these standards. The advanced composite Kevlar hull is independently tested and certified to exceed class society requirements.



nisi
COLLECTION



2600



observation deck



main deck



accommodation deck



SPECIFICATIONS

nisi 2600

GENERAL SPECIFICATIONS

LOA: 88' (26.8m)
LWL: 84' (25.6m)
Beam: 19.8' (6.04m)
Draft: 4'1 (1.25m)
Displacement: 93,000lb (42.1 ton) dry

Fuel: 1,600 gallons (6,057L)
Fresh Water: 558 gallons (2,100L)
Black Water: 250 gallons (946L)
Grey Water: 250 gallons (946L)

Accommodations:
Five Cabins - 8 Guests + 2 Crew

Concept Design & Engineering:
NISI Yachts Group Inc.

Naval Architecture & Design:
Setzer Yacht Architects

Classification:
RINA Pleasure Class.
RINA Charter Class upgrade available
with MCA compliance.

PERFORMANCE

Top Speed: 31kt*
High-Speed Cruise: 25kt
Range: 1,500 nm @ 9kt passage making speeds

Fuel Efficiency:
9kt @ 9 gph / 33 lph
20kt @ 67 gph / 254 lph

Propulsion:
2 x Volvo IPS 1200 Pods
2 x CAT C-18, ZF4000 Pods

Actuated Stability System (optional):
TRAC Standard System.
TRAC Zero-Speed upgrade available.

Optional Layouts Available:

- Galley Up, with additional utility room
- 3 or 4 Staterooms



ନିସି 2400



observation deck



main deck



accommodation deck



SPECIFICATIONS

nisi 2400

GENERAL SPECIFICATIONS

LOA: 82' (24.9m)
LWL: 78' (23.7m)
Beam: 19.8' (6.04m)
Draft: 3.6' (1.12m)

Displacement: 80,000lb (36.6 ton) dry

Fuel: 1,600 gallons (6,057L)
Fresh Water: 558 gallons (2,100L)
Black Water: 200 gallons (757L)
Grey Water: 200 gallons (757L)

Accommodations:
Four Cabins - 6 Guests + 2 Crew

Concept Design & Engineering:
NISI Yachts Group Inc.

Naval Architecture & Design:
Setzer Yacht Architects

Classification:
RINA Charter + MCA Commercial (MGN 280)

PERFORMANCE

Top Speed: 32kt*
High-Speed Cruise: 28kt
Range: 1,500nm @ 9kt passage making speeds

Fuel Efficiency:
9kt @ 8 gph / 29 lph
20kt @ 63 gph / 238 lph

Propulsion:
2 x Volvo IPS 1200 Pods
3 x Cummins QSB8.3, Zeus Pods
2 x CAT C-18, ZF4000 Pods

Actuated Stability System (optional):
TRAC Standard System.
TRAC Zero-Speed upgrade available.

Optional Layouts Available:

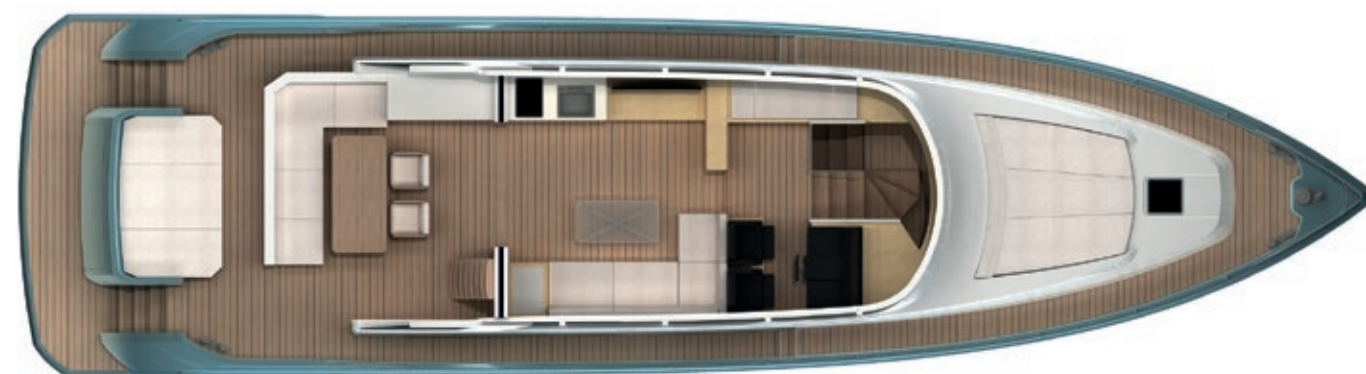
- Galley Down
- 3 or 4 Staterooms



نيسي 1900



observation deck



main deck



accommodation deck



SPECIFICATIONS

nisi 1900

GENERAL SPECIFICATIONS

LOA: 65.8' (20.0m)
LWL: 64' (19.5m)
Beam: 16'4 (4.98m)
Draft: 2.3' (0.70m)

Displacement: 53,000lb (24.3ton) dry

Fuel: 900 gallons (3408L)
Fresh Water: 350 gallons (1325L)
Black Water: 150 gallons (568L)

Accommodations: 3 Guest Cabins + 1 Crew

Concept Design & Engineering:
NISI Yachts Group Inc.

Naval Architecture & Design:
Setzer Yacht Architects

PERFORMANCE

Top Speed: 38kt*
High-Speed Cruise: 35kt

Propulsion:
2 x Volvo IPS 900 Pods
2 x Volvo IPS 1200 Pods*
2 x CAT C18 + Jets

Actuated Stability System:
Humphree Interceptors
TRAC FIN System
Seakeeper Zero-Speed Gyro (not available with Jets)

Classification:
CE Category A or B

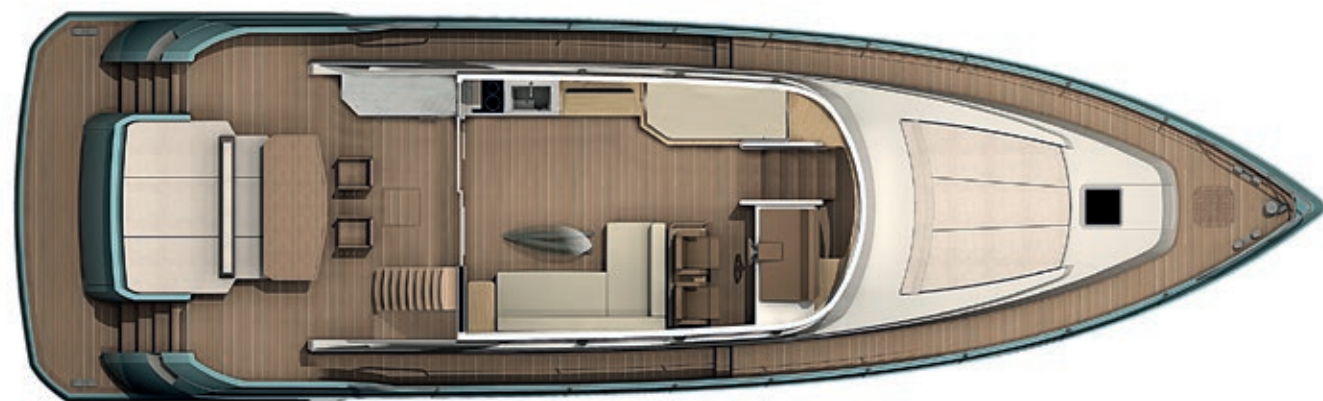


نيسا 1700

nisi 1700



observation deck



main deck



accommodation deck



SPECIFICATIONS

nisi 1700

GENERAL SPECIFICATIONS

LOA: 59.8' (18.2m)
LWL: 52.5' (16.0m)
Beam: 16'4 (4.98m)
Draft: 2.3' (0.70m)

Displacement: 50,500lb (22.9ton) dry

Fuel: 850 gallons (3217L)
Fresh Water: 350 gallons (1325L)
Black Water: 150 gallons (568L)

Accommodations: 3 Guest Cabins

Concept Design & Engineering:
NISI Yachts Group Inc.

Naval Architecture & Design:
Setzer Yacht Architects

PERFORMANCE

Top Speed: 40kt*
High-Speed Cruise: 36kt

Propulsion:
2 x Volvo IPS 900 Pods
2 x Volvo IPS 1200 Pods*
2 x CAT C18 + Jets

Actuated Stability System:
Humphree Interceptors
TRAC FIN System
Seakeeper Zero-Speed Gyro (not available with Jets)

Classification:
CE Category A or B



“NISI is without a doubt an engineering miracle. Other builders now ask to build to the NISI Standard.”

- Mauro Bono, RINA Classification Society

“NISI offers impressive performance at sea. She is a remarkable yacht.”

- Asia-Pacific Boating Magazine

“NISI produces a truly magic carpet ride.”

- BOAT International Magazine

“This is a breakthrough. Nobody has built under 80-feet to commercial RINA and MCA certification before.”

- Yachts International Magazine

“NISI is the nautical personification of the spirit of Café Del Mar, fused with the effortless sophistication of Nikki Beach. She truly is something special.”

- Yachts Emirates Magazine

“No other yacht I’ve tested in recent years has been able to perform like this.”

- Dag Pike, Renowned Yachtsman & Navigator

FOR MORE VISIT:
www.nisiyachts.com

OWNERSHIP INQUIRIES:
ownership@nisiyachts.com



